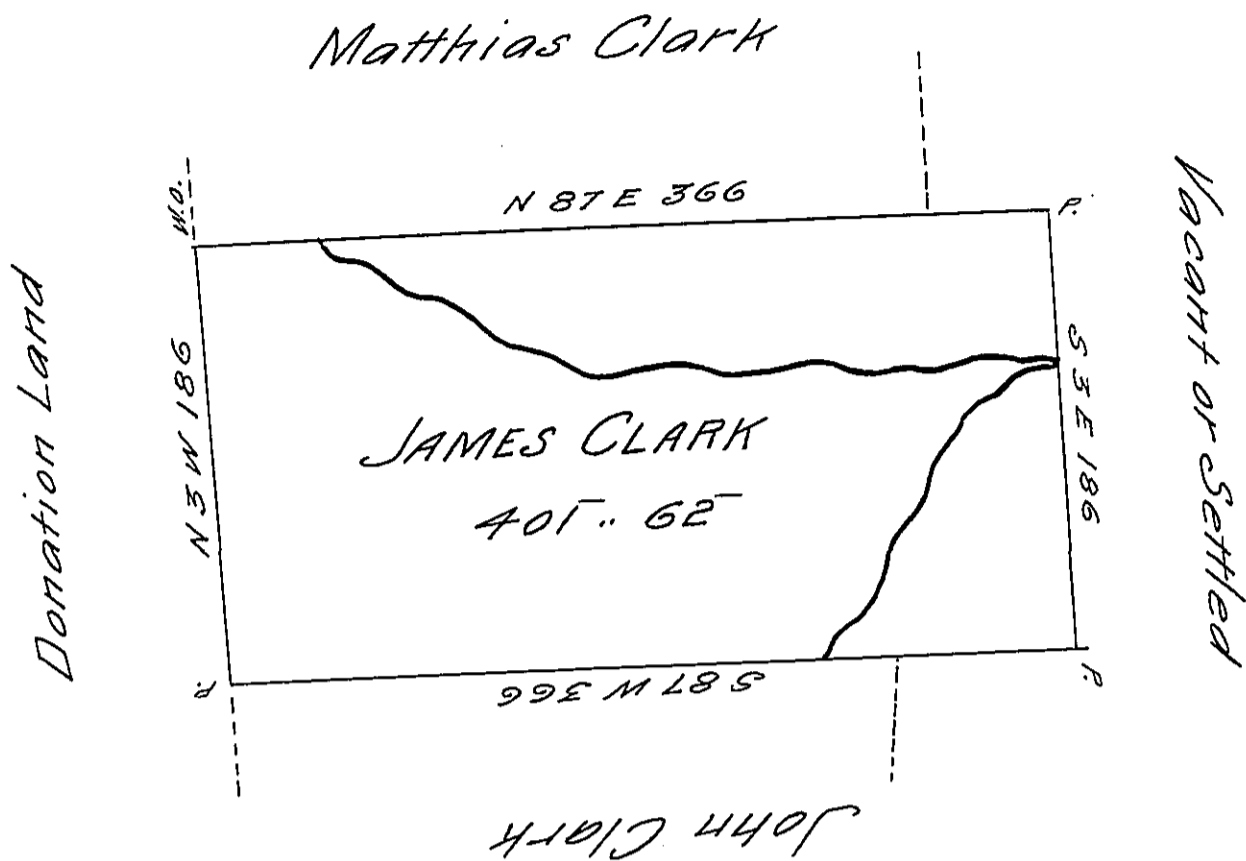


J.C.



Situate on the Waters of Sandy Creek
 in District No. 3 Alleghany County; containing
 four hundred One Acres; sixty two perches
 and allowance; Survey'd 28. June 1800 on
 Actual Settlement made by James Clark
 14. April 1797 —

Ben. Stokely D.S.

Surveyor General
 of
 Pennsylvania

IN TESTIMONY that the above is a copy of the original remaining on file in
 the Department of Internal Affairs of Pennsylvania, made
 conformably to an Act of Assembly approved the 16th day of
 February, 1833, I have hereunto set my Hand and caused
 the Seal of said Department to be affixed at Harrisburg;
 this fourth day of May 1906

Leach Brown
 Secretary of Internal Affairs.